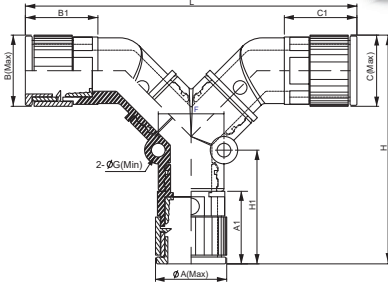




TTC

T Type Connector

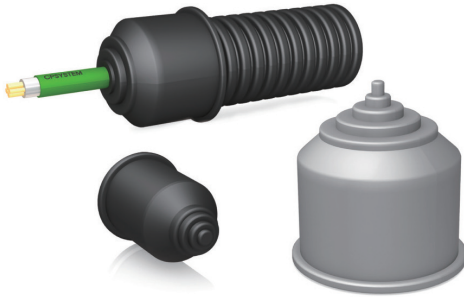


Specifications

Material	High Quality Polyamide 6	Degrees of Protection	IP 67 (EN 60529)
The max. Instantaneous Temperature	-40 °C to +105°C	Short Term	up to +150° C
Self-Extinguishing	UL94-HB / Free of Halogen Phosphorous and cadmium	Color	Black & Gray
Application	CPS distributors guarantee elegant layout and save on cost instead of using distribution boxes. Nominal width from 28, reduceable to 10.		

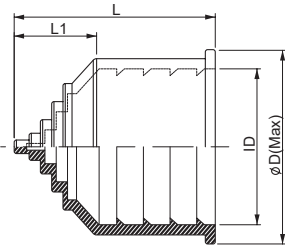
(Unit : mm)

Ordering No.		A	B	C	ØA	A1	ØB	B1	ØC	C1	ØG	F	H1	H	L
Black	Gray														
TTC-101010B	TTC-101010G	10.0	10.0	10.0	23.0	26.6	23.0	24.0	23.0	24.0	5.0	24.0	41.6	81.0	114.0
TTC-121010B	TTC-121010G	12.0	10.0	10.0	25.0	26.5	23.0	24.0	23.0	24.0	5.0	24.0	41.5	81.0	114.0
TTC-121210B	TTC-121210G	12.0	12.0	10.0	25.0	26.5	25.0	24.4	23.0	24.0	5.0	24.0	41.5	83.0	118.0
TTC-121212B	TTC-121212G	12.0	12.0	12.0	25.0	26.5	25.0	24.4	25.0	24.4	5.0	24.0	41.5	83.0	120.0
TTC-161010B	TTC-161010G	16.0	10.0	10.0	30.0	28.5	23.0	24.0	23.0	24.0	5.0	24.0	43.5	82.0	114.0
TTC-161210B	TTC-161210G	16.0	12.0	10.0	30.0	28.5	25.0	24.4	23.0	24.0	5.0	24.0	43.5	85.0	118.0
TTC-161212B	TTC-161212G	16.0	12.0	12.0	30.0	28.5	25.0	24.4	25.0	24.4	5.0	24.0	43.5	85.0	120.0
TTC-161616B	TTC-161616G	16.0	16.0	16.0	30.0	28.5	30.0	26.0	30.0	26.0	5.0	24.0	43.5	90.0	124.0
TTC-222222B	TTC-222222G	22.0	22.0	22.0	41.0	33.3	41.0	33.5	41.0	33.5	5.6	39.0	48.2	110.0	156.0
TTC-282222B	TTC-282222G	28.0	22.0	22.0	47.0	39.0	41.0	33.5	41.0	33.5	5.6	39.0	53.9	116.0	156.0
TTC-282822B	TTC-282822G	28.0	28.0	22.0	47.0	39.0	47.0	39.5	41.0	33.5	5.6	39.0	53.9	120.0	165.0
TTC-282828B	TTC-282828G	28.0	28.0	28.0	47.0	39.0	47.0	39.5	47.0	39.5	5.6	39.0	53.9	120.0	174.0



FEC

CPSFIX Series



Specifications

Material	N.B.R (Nitrile-Gutadiene Rubber)	Degrees of Protection	IP 66 (EN 60529)
Properties	Tube terminal, assembled by just putting on	Color	Black & Gray
For tube type	Corrugated tubes, type of CPSFLEX		

(Unit : mm)

Ordering No.		Tube Size	Min	Max	L1	L	ID	ØD
Black	Gray							
FEC-07B	FEC-07G	07	2.0	7.0	8.0	24.0	10.0	16.0
FEC-10B	FEC-10G	10	3.0	10.0	11.0	33.0	12.5	17.0
FEC-12B	FEC-12G	12	4.2	12.0	11.0	33.0	16.0	23.5
FEC-16B	FEC-16G	16	6.0	16.0	12.5	34.5	21.2	29.0
FEC-22B	FEC-22G	22	6.0	22.0	16.0	43.0	28.5	37.0
FEC-28B	FEC-28G	28	6.0	28.0	16.0	43.0	34.5	43.0
FEC-36B	FEC-36G	36	6.0	36.0	24.0	58.5	42.5	52.0
FEC-48B	FEC-48G	48	6.0	48.0	24.0	58.5	54.5	64.0
FEC-56B	FEC-56G	56	9.0	56.0	29.0	71.0	67.2	76.7
FEC-70B	FEC-70G	70	10.0	70.0	36.0	86.0	82.5	92.0
FEC-95B	FEC-95G	95	13.0	95.0	45.0	110.0	106.0	115.5