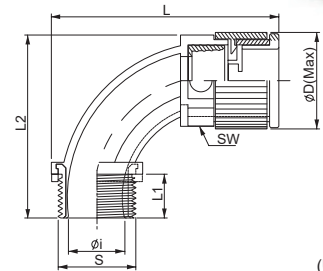


SWC

Elbow 90° Connector



(Unit : mm)

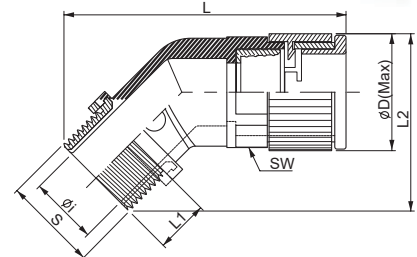
Specifications

| | | | |
|------------------------------------|---|-----------------------|------------------|
| Material | High Quality Polyamide 6 + Brass Nickel plated | Degrees of Protection | IP 67 (EN 60529) |
| The max. Instantaneous Temperature | -40 °C to +105°C | Short Term | up to +150° C |
| Self-Extinguishing | UL94-HB / Free of Halogen Phosphorous and cadmium | Color | Black & Gray |
| Application | Tramway Vehicle Construction etc. | | |

| | Ordering No. | | Thread | Tube Size | S | L1 | L2 | L | Øi | ØD | SW |
|--------------------------|--------------------------------|-----------|-----------|-----------|------|----|-----|-----|----|----|------|
| | Black | Gray | | | | | | | | | |
| Pg Thread (DIN 40430) | SWC-P077B | SWC-P077G | Pg07 | 07 | 12.5 | 11 | 33 | 41 | 6 | 17 | 14.2 |
| | SWC-P09B | SWC-P09G | Pg09 | 10 | 15.2 | 13 | 53 | 62 | 8 | 25 | 19.8 |
| | SWC-P11B | SWC-P11G | Pg11 | 12 | 18.6 | 13 | 53 | 60 | 9 | 25 | 22.7 |
| | SWC-P136B | SWC-P136G | Pg13.5 | 16 | 20.4 | 13 | 62 | 66 | 12 | 30 | 28.0 |
| | SWC-P16B | SWC-P16G | Pg16 | 16 | 22.5 | 13 | 62 | 66 | 12 | 30 | 28.0 |
| | SWC-P21B | SWC-P21G | Pg21 | 22 | 28.3 | 15 | 71 | 81 | 18 | 41 | 37.5 |
| | SWC-P29B | SWC-P29G | Pg29 | 28 | 37.0 | 15 | 77 | 96 | 25 | 47 | 43.0 |
| | SWC-P36B | SWC-P36G | Pg36 | 36 | 47.0 | 19 | 97 | 119 | 31 | 56 | 52.2 |
| | SWC-P48B | SWC-P48G | Pg48 | 48 | 59.3 | 19 | 112 | 141 | 42 | 68 | 64.1 |
| | Metric Thread (EN 60423) | SWC-M107B | SWC-M107G | M12 X 1.5 | 07 | 12 | 11 | 33 | 41 | 6 | 17 |
| SWC-M10B | | SWC-M10G | M12 X 1.5 | 10 | 12 | 13 | 53 | 62 | 6 | 25 | 19.8 |
| SWC-M12B | | SWC-M12G | M16 X 1.5 | 12 | 16 | 13 | 53 | 60 | 9 | 25 | 22.7 |
| SWC-M16B | | SWC-M16G | M20 X 1.5 | 16 | 20 | 13 | 62 | 66 | 12 | 30 | 28.0 |
| SWC-M22B | | SWC-M22G | M25 X 1.5 | 22 | 25 | 15 | 71 | 81 | 16 | 41 | 37.5 |
| SWC-M28B | | SWC-M28G | M32 X 1.5 | 28 | 32 | 15 | 77 | 96 | 23 | 47 | 43.0 |
| SWC-M36B | | SWC-M36 G | M40 X 1.5 | 36 | 40 | 19 | 97 | 119 | 31 | 56 | 52.2 |
| SWC-M48B | | SWC-M48G | M50 X 1.5 | 48 | 50 | 19 | 112 | 141 | 41 | 68 | 64.1 |

SAC

Elbow 45° Connector



(Unit : mm)

Specifications

| | | | |
|------------------------------------|---|-----------------------|------------------|
| Material | High Quality Polyamide 6 + Brass Nickel plated | Degrees of Protection | IP 67 (EN 60529) |
| The max. Instantaneous Temperature | -40 °C to +105°C | Short Term | up to +150° C |
| Self-Extinguishing | UL94-HB / Free of Halogen Phosphorous and cadmium | Color | Black & Gray |
| Application | Tramway Vehicle Construction etc. | | |

| | Ordering No. | | Thread | Tube Size | S | L1 | L2 | L | Øi | ØD | SW | |
|--------------------------|--------------------------------|-----------|-----------|-----------|------|----|----|-----|----|----|------|------|
| | Black | Gray | | | | | | | | | | |
| Pg Thread (DIN 40430) | SAC-P09B | SAC-P09G | Pg09 | 10 | 15.2 | 13 | 34 | 62 | 8 | 25 | 19.8 | |
| | SAC-P11B | SAC-P11G | Pg11 | 12 | 18.6 | 13 | 39 | 68 | 9 | 25 | 22.7 | |
| | SAC-P136B | SAC-P136G | Pg13.5 | 16 | 20.4 | 13 | 45 | 68 | 12 | 30 | 28.0 | |
| | SAC-P16B | SAC-P16G | Pg16 | 16 | 22.5 | 13 | 46 | 68 | 12 | 30 | 28.0 | |
| | SAC-P21B | SAC-P21G | Pg21 | 22 | 28.3 | 15 | 58 | 82 | 18 | 41 | 37.5 | |
| | SAC-P29B | SAC-P29G | Pg29 | 28 | 37.0 | 15 | 63 | 92 | 25 | 47 | 43.0 | |
| | SAC-P36B | SAC-P36G | Pg36 | 36 | 47.0 | 20 | 77 | 104 | 31 | 56 | 52.2 | |
| | SAC-P48B | SAC-P48G | Pg48 | 48 | 59.3 | 20 | 92 | 125 | 47 | 68 | 64.1 | |
| | Metric Thread (EN 60423) | SAC-M10B | SAC-M10G | M12 X 1.5 | 10 | 12 | 13 | 33 | 58 | 6 | 25 | 19.8 |
| | | SAC-M12B | SAC-M12G | M16 X 1.5 | 12 | 16 | 13 | 38 | 62 | 9 | 25 | 22.7 |
| SAC-M16B | | SAC-M16G | M20 X 1.5 | 16 | 20 | 13 | 45 | 67 | 12 | 30 | 28.0 | |
| SAC-M22B | | SAC-M22G | M25 X 1.5 | 22 | 25 | 15 | 56 | 80 | 16 | 41 | 37.5 | |
| SAC-M28B | | SAC-M28G | M32 X 1.5 | 28 | 32 | 15 | 61 | 92 | 23 | 47 | 43.0 | |
| SAC-M36B | | SAC-M36G | M40 X 1.5 | 36 | 40 | 20 | 74 | 104 | 31 | 56 | 52.2 | |
| SAC-M48B | | SAC-M48G | M50 X 1.5 | 48 | 50 | 20 | 89 | 125 | 40 | 68 | 64.1 | |