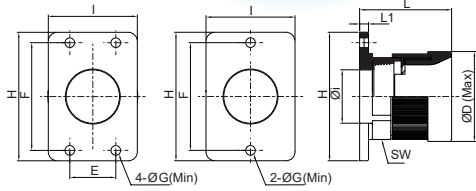


# PNOC

Straight Fittings of flange type



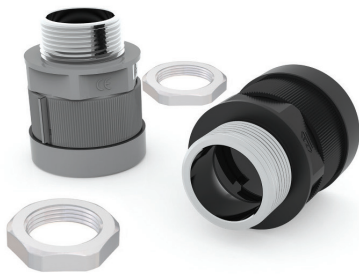
## Specifications



Material	High Quality Polyamide 6	Degrees of Protection	IP 67 (EN 60529)
The max. Instantaneous Temperature	-40 °C to +105°C	Short Term	up to +150° C
Self-Extinguishing	UL94-HB / Free of Halogen Phosphorous and cadmium	Color	Black & Gray
Application	Machine tool, Shipbuilding, Tramway, Industrial / Automatic Machinery, Printing Machine etc. Pipe with connector.		

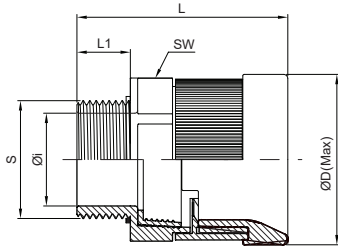
(Unit : mm)

Ordering No.		Tube Size	E	F	G	H	I	L1	L	Øi	ØD	SW
Black	Gray											
PNOC-12B	PNOC-12G	12	-	36.5	5.5	46.0	32.0	5.0	35.1	15.0	27.6	22.8
PNOC-16B	PNOC-16G	16	-	36.5	5.5	46.0	32.0	5.0	37.0	17.5	33.0	28.0
PNOC-22B	PNOC-22G	22	30.5	53.5	5.5	65.0	45.0	5.0	44.7	22.0	43.0	37.5
PNOC-28B	PNOC-28G	28	31.0	54.8	6.5	64.8	45.0	6.0	53.4	27.0	48.8	43.0
PNOC-36B	PNOC-36G	36	31.0	73.2	6.5	86.6	60.0	6.0	63.1	40.1	60.6	52.2
PNOC-48B	PNOC-48G	48	30.5	73.2	6.5	86.6	73.0	6.0	66.4	50.0	71.8	64.0



# SPNC

Straight Fittings



## Specifications



Material	High Quality Polyamide 6	Degrees of Protection	IP 68 (EN 60529)
The max. Instantaneous Temperature	-40 °C to +105°C	Short Term	up to +150° C
Self-Extinguishing	UL94-HB / Free of Halogen Phosphorous and cadmium	Color	Black & Gray
Application	Tramway Vehicle Construction etc		

(Unit : mm)

	Ordering No.		Thread	Tube Size	S	L 1	L	Øi	ØD	SW
	Black	Gray								
Pg Thread (DIN 40430)	SPNC-P09B	SPNC-P09G	Pg09	10	15.2	14.0	43.0	10.0	25.0	19.7
	SPNC-P11B	SPNC-P11G	Pg11	12	18.6	14.0	43.0	14.0	27.6	22.8
	SPNC-P132B	SPNC-P132G	Pg13.5	12	20.4	14.0	43.0	15.0	27.6	22.8
	SPNC-P136B	SPNC-P136G	Pg13.5	16	20.4	14.0	44.0	15.2	33.0	28.0
	SPNC-P16B	SPNC-P16G	Pg16	16	22.5	16.0	44.0	15.2	33.0	28.0
	SPNC-P21B	SPNC-P21G	Pg21	22	28.3	16.0	52.0	22.0	43.0	37.5
	SPNC-P29B	SPNC-P29G	Pg29	28	37.0	16.0	56.0	30.5	48.8	43.0
	SPNC-P36B	SPNC-P36G	Pg36	36	47.0	20.0	68.0	36.0	60.6	52.2
	SPNC-P48B	SPNC-P48G	Pg48	48	59.3	22.0	75.0	52.4	71.8	64.0
	Metric Thread (EN 60423)	SPNC-M10B	SPNC-M10G	M12 X 1.5	10	12.0	14.0	43.0	7.5	25.0
SPNC-M12B		SPNC-M12G	M16 X 1.5	12	16.0	14.0	43.0	12.0	27.6	22.8
SPNC-M16B		SPNC-M16G	M20 X 1.5	16	20.0	14.0	44.0	15.2	33.0	28.0
SPNC-M22B		SPNC-M22G	M25 X 1.5	22	25.0	16.0	52.0	20.6	43.0	37.5
SPNC-M28B		SPNC-M28G	M32 X 1.5	28	32.0	16.0	56.0	27.0	48.8	43.0
SPNC-M36B		SPNC-M36G	M40 X 1.5	36	40.0	20.0	77.0	33.0	60.6	52.2
SPNC-M48B		SPNC-M48G	M50 X 1.5	48	50.0	22.0	75.0	42.0	71.8	64.0