

SK Series

Steel Cable Chain

- Highly durable cable chains made of steel and aluminum
- Smaller Link Plate design provide more stability
- Customized holes and frames can give stronger supporting power
- For various industrial applications like conveying machinery etc.

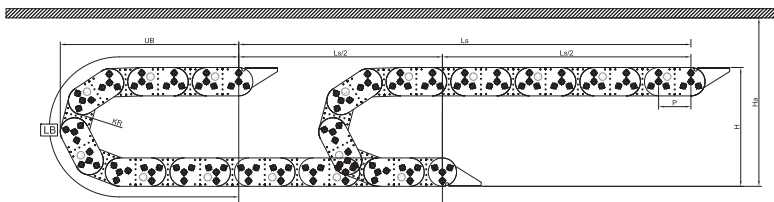
Ordering Information

SKS 70 . BST 84 . KR 125 / F - XXXL
 ① ② ③ Length(mm)

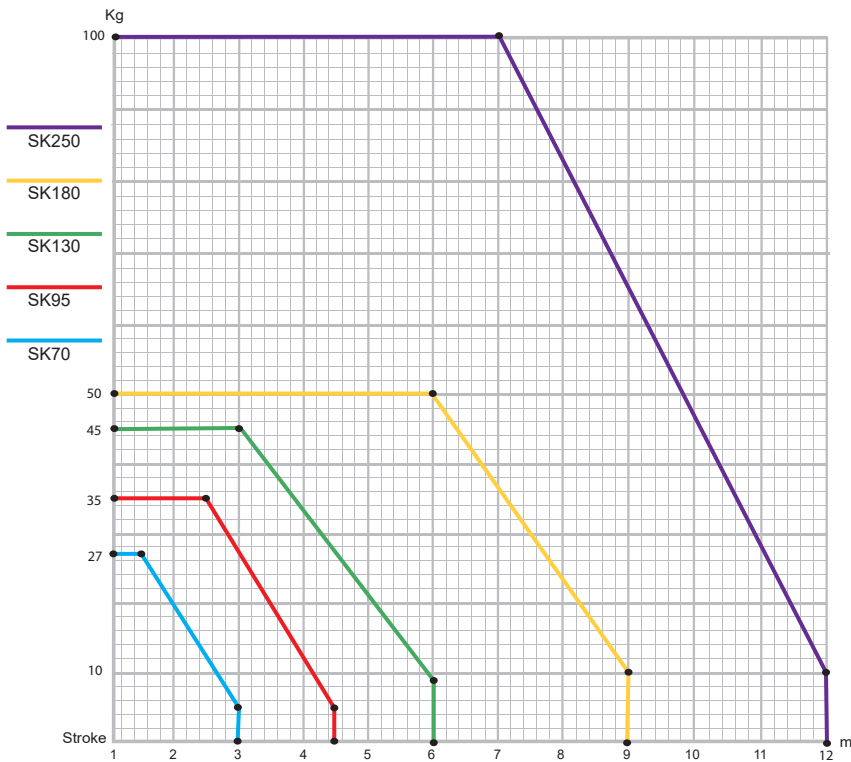
Calculation of the chain length

$$[L = \frac{Ls}{2} + LB]$$

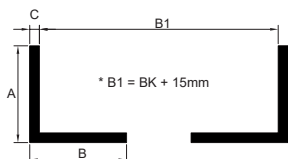
Ls: Stroke UB: Loop Projection



Unsupported Length



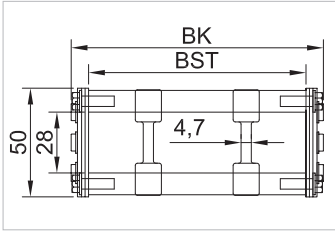
Guide Channel



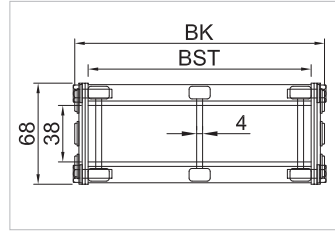
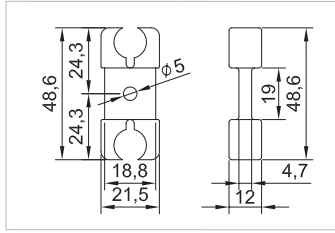
	SK70	SK95	SK130	SK180	SK250
A	30	50	65	90	100
B	30	50	65	90	100
C	3	4	5	6	7

① Pitch (mm)	② Inner Width (Frame width) (BST)	③ Bending Radius (KR)	Loop Length (LB)	Safe Space (Ha)	Moving Height (H)	Q'ty of Divider	Outside width (BK)
70	84	75	515	210	200	2	100
	109						
	134						
	159						
	184						
	234						
	284						
95	109	125	770	330	318	1	100
	132						
	157						
	182						
	232						
	282						
	332						
	382						
	432						
	482						
	532						
	582						
130	130	150	990	410	394	3	200
	157						
	182						
	232						
	282						
	332						
	382						
	432						
	482						
	532						
	582						
	632						
180	180	250	1,500	650	640	2	200
	221						
	271						
	321						
	371						
	421						
	471						
	521						
	571						
	621						
	671						
	721						
	771						
	821						
250	250	350	2100	950	950	UP	300
	300						
	350						
	400						
	450						
	500						
	550						
	600						
	650						
	700						
	750						
	800						
850							
900							
300	300	400	2255	1050	1020	Down	400
	350						
	400						
	450						
	500						
	550						
	600						
	650						
	700						
	750						
	800						
	850						
900							
950							
400	400	500	2410	1150	1120	UP	500
	450						
	500						
	550						
	600						
	650						
	700						
	750						
	800						
	850						
	900						
	950						
1000							
500	500	600	2880	1450	1420	Down	600
	550						
	600						
	650						
	700						
	750						
	800						
	850						
	900						
	950						
	1000						
	1050						
1100							
600	600	700	3350	1750	1720	UP	700
	650						
	700						
	750						
	800						
	850						
	900						
	950						
	1000						
	1050						
	1100						
	1150						
700	700	800	3,230	1,750	1,740	Down	800
	750						
	800						
	850						
	900						
	950						
	1000						
	1050						
	1100						
	1150						
	1200						
	1250						

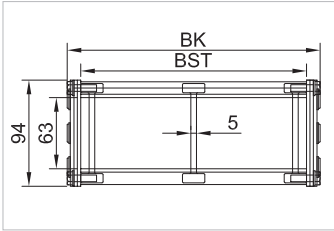
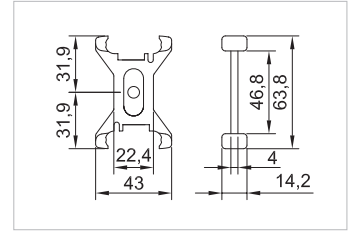
Solid Bar Type



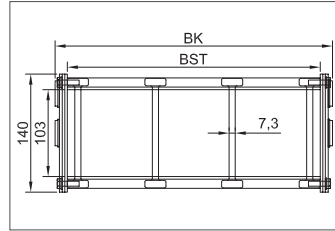
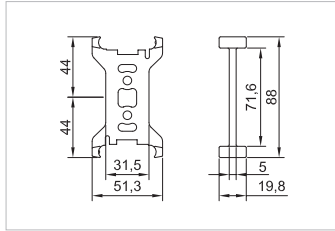
KS70



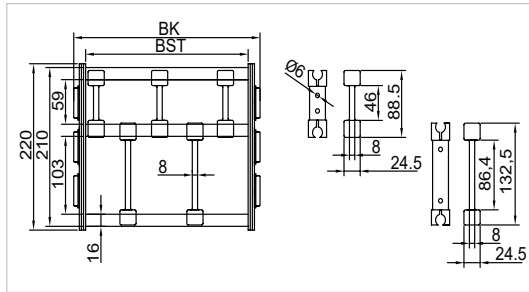
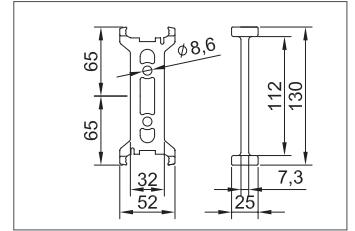
KS95



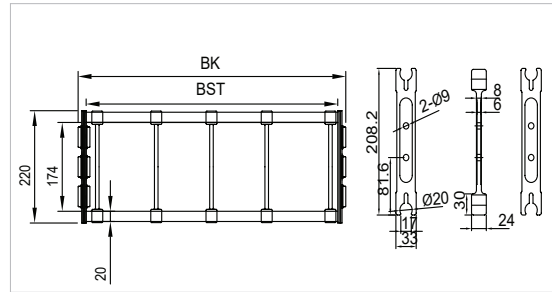
KS130



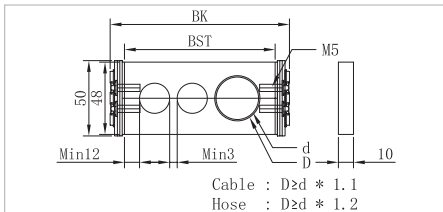
KS180



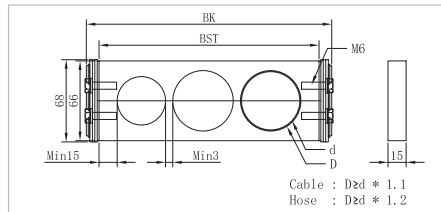
KS250



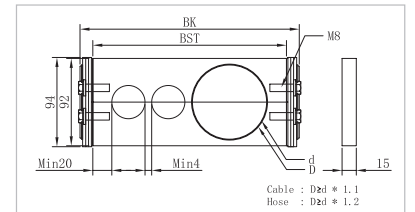
Hole Bar Type



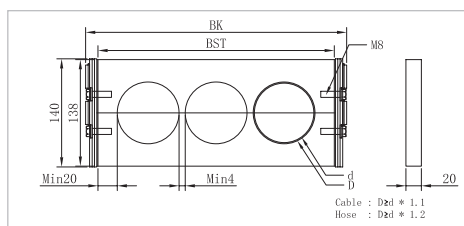
KS70



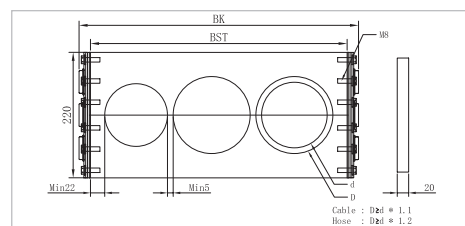
KS95



KS130



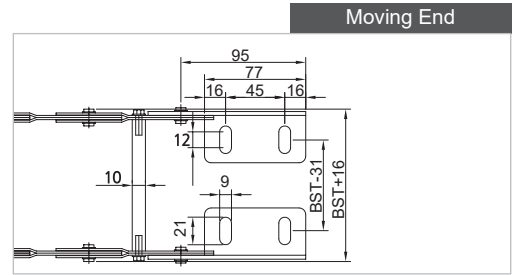
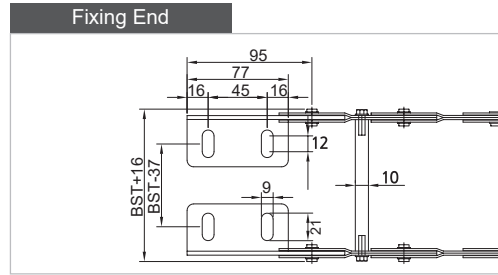
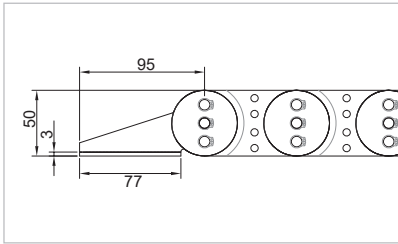
KS180



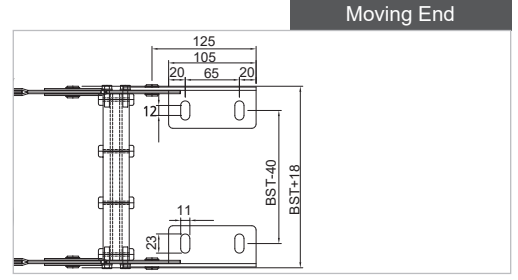
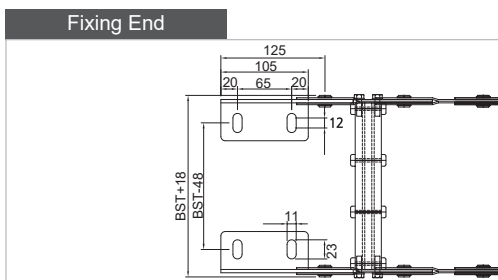
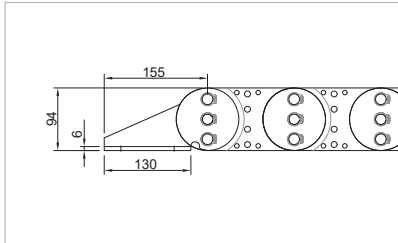
KS250

Bracket

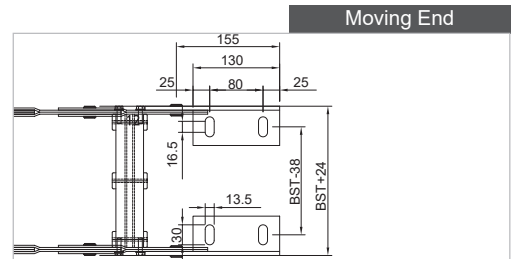
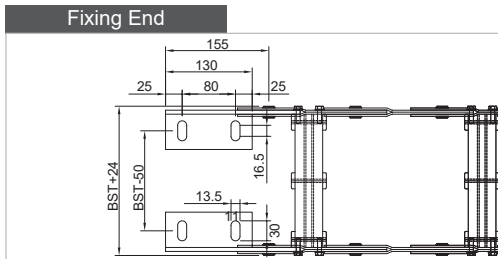
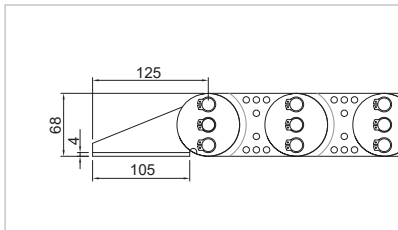
KS70



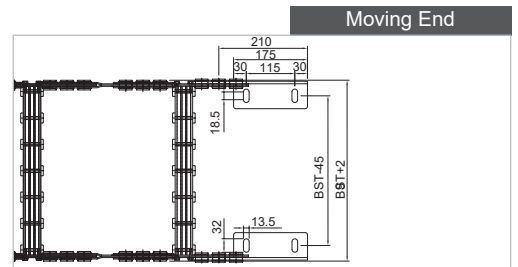
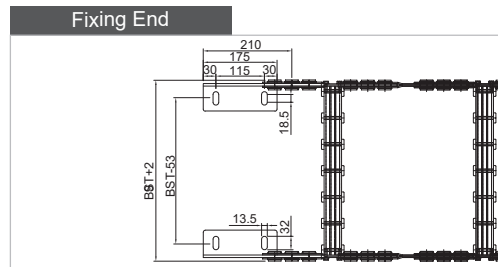
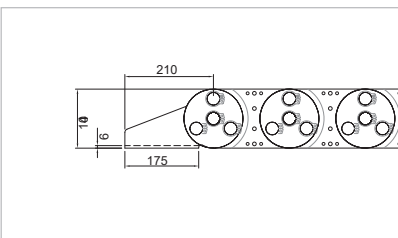
KS95



KS130



KS180



KS250

