



# MP115 Series

115mm Battery-powered LED Warning Lights



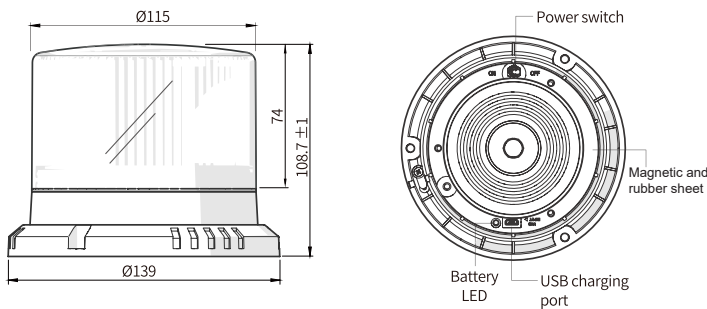
- Mountable on metal surface with strong magnetic base
- Excellent indoor and outdoor visibility
- Easy to recharge 18650 Li-ion battery with USB port
- Two flashing patterns or adjustable rotating light
- Can be used as a portable warning light in various situation

## Ordering Information

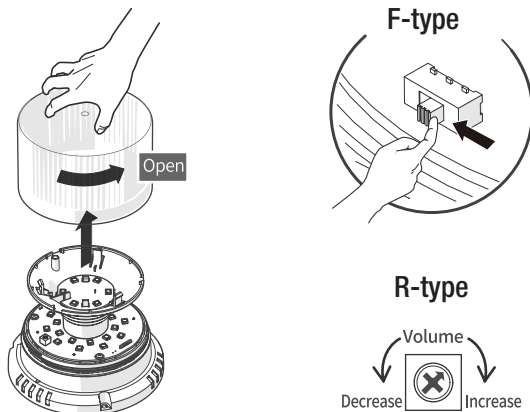
MP115 - M F 05 - R  
 ① ② ③

① Mount Type	<b>M</b>	Magnet Mount
② LED Function	<b>F</b>	LED Flashing (normal+emergency flashing)
	<b>R</b>	LED Rotation
③ Colors	<b>R</b>	Red
	<b>Y</b>	Yellow
	<b>G</b>	Green

## Dimensions



## LED Rotation Speed Change



## Specifications

Material	ABS, PC, Ferrite magnet, Rubber	
Output / Input	5W / DC 5V 2000mA(max)	
Full Charge Time	app. 4hr(based on 5V, 2A charger)	
Operation Time	Max. 12hr (Emergency flashing)	
Dimension	Ø139 x 108.7 mm	
Components	Product, Instruction Manual	
Magnetic force	app. 50kg(110 lbs)	
Lens Color	Red, Yellow, Green	
Battery	Lithium Ion Battery	
Battery Spec	18650, 3.7V, 2000mAh	
Charging Port	Micro B-type USB port	
Battery Status Display	Red LED ON status : Available state (battery 4.2V~2.8V) Red LED OFF status : Unstable use (battery 2.8V or less)	
Battery life	Can be used more than 300 times at normal temperature	
Operating Voltage	LED in normal operation: DC 4.2V ~ 3.5V or more	
LED Function	F type	R type
	Normal flashing+emergency flashing (selected by internal switch)	Rotation (built-in rotation speed control volume)
Flashing/Rotation Speed	Normal flashing: 80±5 times per min, Emergency: 240±5times per min	Rotation mode:60~300±rpm
	Battery Usage Time*	app. 9 hours using flashing mode
Current Consumption	Standard flashing:1170mA Emergency flashing:620mA	Rotation mode:200mA
Product mount	Directly fixing the magnetic mount base	
Ambient Temperature	-15°C~40°C	
Storage Temperature	-20°C ~ 70°C	
Ambient Humidity	45~85% RH	
Vibration	30Hz(1minute cycle) 1 Hours double amplitude 0.75mm in X,Y,Z respective direction	
Certification	CE, RoHS	
Degree of Protection	IP55	
Product Weight	app. 712g	

\*When 2x2000mAh batteries inserted and full charged as 4.2V

## LED Brightness

	(±10 lm)		
	Red LED	Yellow LED	Green LED
	50 lm	55 lm	40 lm