



MB Series

Aluminum Switch Boxes

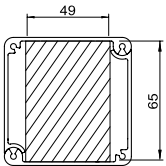
Ordering Information

MB 57 - S - 01 - AA
 ① ② ③ ④

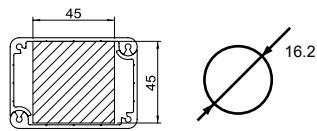
① Box Size	57	50mm X 70mm (Ø16mm hole)
	70	70mm X 70mm (Ø22mm hole)
① Box Style	S	Square Side
	T	Triangular Side (MB70 only)
③ Number of Holes	01	1 Hole
	02	2 Holes
	03	3 Holes
	04	4 Holes
	05	5 Holes
④ Box Cap	AA	Standard

Mounting Effective Dimension

MB70 - S



MB57

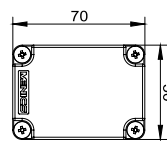


Dimensions

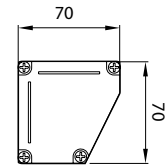
(unit: mm)

	MB57 AA		MB70 AA	
	L	P	L	P
1 Hole	86	-	86	-
2 Holes	101	25	136	50
3 Holes	126	50	186	100
4 Holes	151	75	236	150
5 Holes	176	100	286	200

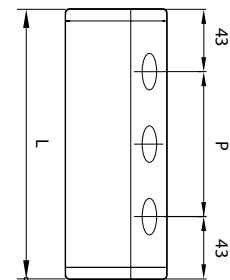
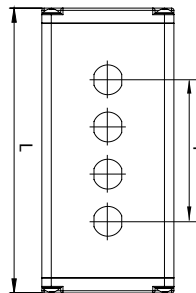
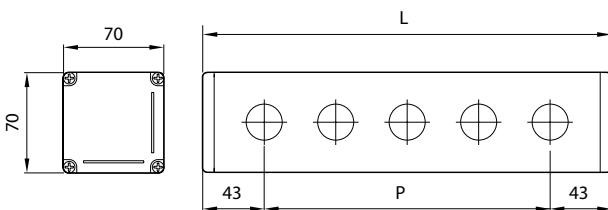
MB57 - S - AA



MB70 - T - AA



MB70 - S - AA

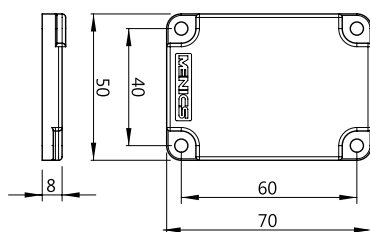


Box Cap Options

(unit: mm)

MB57 Series

CL57-A



MB70 Series

CL70-A

