



# 730 Series

Heavy Duty Relays

730 Series are designed with DIN rail mount & Panel direct mount, and Quick connector (#250) & terminal screw type, reliability and long life, and pushbutton allows manual operation of the relay

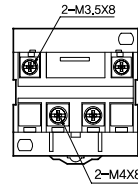


## Specifications

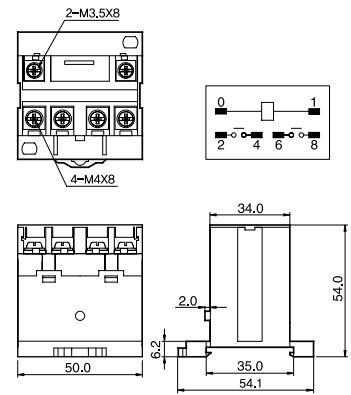
<b>Part Numbers</b>	Screw Terminal & DIN Rail Mount Type	730-1TR - 220VAC 730-1TR - 110VAC 730-1TR - 24VDC 730-1TR - 12VDC	730-2TR - 220VAC 730-2TR - 110VAC 730-2TR - 24VDC 730-2TR - 12VDC
	Quick Connector (#250) & DIN Rail Mount Type	730-1QR - 220VAC 730-1QR - 110VAC 730-1QR - 24VDC 730-1QR - 12VDC	730-2QR - 220VAC 730-2QR - 110VAC 730-2QR - 24VDC 730-2QR - 12VDC
	Screw Terminal & Panel Mount Type	730-1TB - 220VAC 730-1TB - 110VAC 730-1TB - 24VDC 730-1TB - 12VDC	730-2TB - 220VAC 730-2TB - 110VAC 730-2TB - 24VDC 730-2TB - 12VDC
	Quick Connector (#250) & Panel Mount Type	730-1QB - 220VAC 730-1QB - 110VAC 730-1QB - 24VDC 730-1QB - 12VDC	730-2QB - 220VAC 730-2QB - 110VAC 730-2QB - 24VDC 730-2QB - 12VDC
<b>Contact</b>	Configuration	SPST (1NO)	DPST (2NO)
	Material	Silver alloy	
	Max. Switching current	30A	25A
	Rated Max. Resistive Load	30A at 30VDC/277VAC	25A at 30VDC/277VAC
<b>Coil Spec.</b>	Min. Switching requirement	100mA 5VDC	
	Coil Voltage	12VDC, 24VDC, 100/120 VAC 50/60Hz, 220.240 VAC	
	Power consumption	DC: approx. 1.9W 6-48VAC: 1.7-1.9VA 100/120VAC: 1.9-2.7VA 200/240VAC: 1.8-2.6VA	
	Minimum operating voltage	80% of Nominal	
	Dropout voltage	DC Coil: 10% of Nominal AC Coil: 30% of Nominal	
	Operating Time	30ms	
	Dropout time	30ms	
	Insulation resistance	100MΩ at 500V DC	
	Dielectric Strength	Between Contact(2a): 2,000 Vrms 1Min. Between Contact & Coil: 4,000Vrms 1Min.	
	General Info.	Mechanical life	Min. 1,000,000 operations
Electrical life	Min. 100,000 operations		
Vibration resistant	10~55Hz (width of vibration 105mm)		
Ambient temperature	-10 ~ +60°C (-14°F ~ 140°F) (with no icing)		
Ambient humidity	35% ~ 80% RH (with no icing)		
Weight	TB Type: 210g (7.40oz), QB Type: 160g (5.6oz)		

## Dimensions (unit: mm)

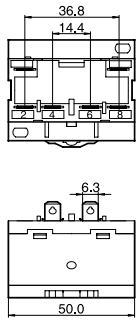
730-1TR



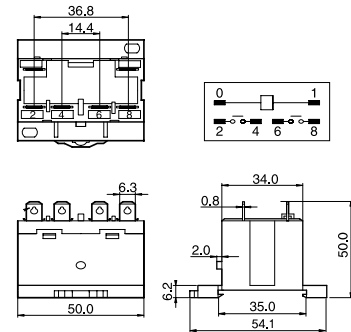
730-2TR



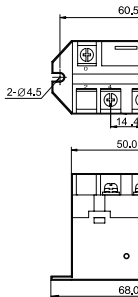
730-1QR



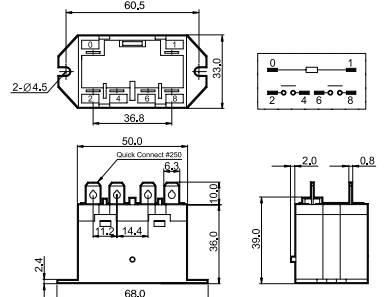
730-2QR



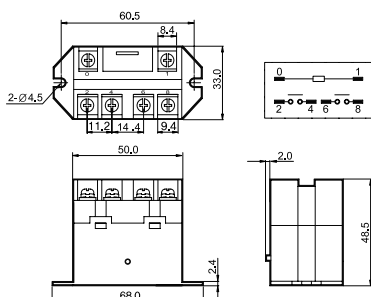
730-1TB



730-2QB



730-2TB



730-1QB

