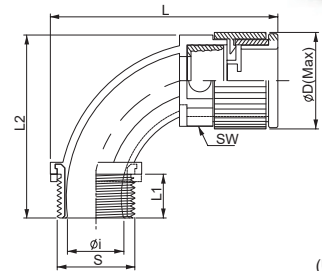


SWC

Elbow 90° Connector



(Unit : mm)

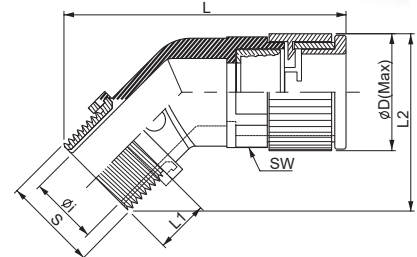
Specifications

Material	High Quality Polyamide 6 + Brass Nickel plated	Degrees of Protection	IP 67 (EN 60529)
The max. Instantaneous Temperature	-40 °C to +105°C	Short Term	up to +150° C
Self-Extinguishing	UL94-HB / Free of Halogen Phosphorous and cadmium	Color	Black & Gray
Application	Tramway Vehicle Construction etc.		

	Ordering No.		Thread	Tube Size	S	L1	L2	L	Øi	ØD	SW
	Black	Gray									
Pg Thread (DIN 40430)	SWC-P077B	SWC-P077G	Pg07	07	12.5	11	33	41	6	17	14.2
	SWC-P09B	SWC-P09G	Pg09	10	15.2	13	53	62	8	25	19.8
	SWC-P11B	SWC-P11G	Pg11	12	18.6	13	53	60	9	25	22.7
	SWC-P136B	SWC-P136G	Pg13.5	16	20.4	13	62	66	12	30	28.0
	SWC-P16B	SWC-P16G	Pg16	16	22.5	13	62	66	12	30	28.0
	SWC-P21B	SWC-P21G	Pg21	22	28.3	15	71	81	18	41	37.5
	SWC-P29B	SWC-P29G	Pg29	28	37.0	15	77	96	25	47	43.0
	SWC-P36B	SWC-P36G	Pg36	36	47.0	19	97	119	31	56	52.2
	SWC-P48B	SWC-P48G	Pg48	48	59.3	19	112	141	42	68	64.1
	Metric Thread (EN 60423)	SWC-M107B	SWC-M107G	M12 X 1.5	07	12	11	33	41	6	17
SWC-M10B		SWC-M10G	M12 X 1.5	10	12	13	53	62	6	25	19.8
SWC-M12B		SWC-M12G	M16 X 1.5	12	16	13	53	60	9	25	22.7
SWC-M16B		SWC-M16G	M20 X 1.5	16	20	13	62	66	12	30	28.0
SWC-M22B		SWC-M22G	M25 X 1.5	22	25	15	71	81	16	41	37.5
SWC-M28B		SWC-M28G	M32 X 1.5	28	32	15	77	96	23	47	43.0
SWC-M36B		SWC-M36 G	M40 X 1.5	36	40	19	97	119	31	56	52.2
SWC-M48B		SWC-M48G	M50 X 1.5	48	50	19	112	141	41	68	64.1

SAC

Elbow 45° Connector



(Unit : mm)

Specifications

Material	High Quality Polyamide 6 + Brass Nickel plated	Degrees of Protection	IP 67 (EN 60529)
The max. Instantaneous Temperature	-40 °C to +105°C	Short Term	up to +150° C
Self-Extinguishing	UL94-HB / Free of Halogen Phosphorous and cadmium	Color	Black & Gray
Application	Tramway Vehicle Construction etc.		

	Ordering No.		Thread	Tube Size	S	L1	L2	L	Øi	ØD	SW	
	Black	Gray										
Pg Thread (DIN 40430)	SAC-P09B	SAC-P09G	Pg09	10	15.2	13	34	62	8	25	19.8	
	SAC-P11B	SAC-P11G	Pg11	12	18.6	13	39	68	9	25	22.7	
	SAC-P136B	SAC-P136G	Pg13.5	16	20.4	13	45	68	12	30	28.0	
	SAC-P16B	SAC-P16G	Pg16	16	22.5	13	46	68	12	30	28.0	
	SAC-P21B	SAC-P21G	Pg21	22	28.3	15	58	82	18	41	37.5	
	SAC-P29B	SAC-P29G	Pg29	28	37.0	15	63	92	25	47	43.0	
	SAC-P36B	SAC-P36G	Pg36	36	47.0	20	77	104	31	56	52.2	
	SAC-P48B	SAC-P48G	Pg48	48	59.3	20	92	125	47	68	64.1	
	Metric Thread (EN 60423)	SAC-M10B	SAC-M10G	M12 X 1.5	10	12	13	33	58	6	25	19.8
		SAC-M12B	SAC-M12G	M16 X 1.5	12	16	13	38	62	9	25	22.7
SAC-M16B		SAC-M16G	M20 X 1.5	16	20	13	45	67	12	30	28.0	
SAC-M22B		SAC-M22G	M25 X 1.5	22	25	15	56	80	16	41	37.5	
SAC-M28B		SAC-M28G	M32 X 1.5	28	32	15	61	92	23	47	43.0	
SAC-M36B		SAC-M36G	M40 X 1.5	36	40	20	74	104	31	56	52.2	
SAC-M48B		SAC-M48G	M50 X 1.5	48	50	20	89	125	40	68	64.1	