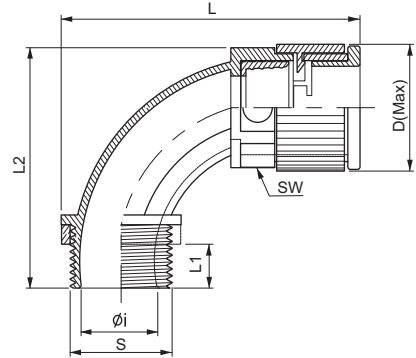




# TWCL IP67



Black  
Gray



G(PF) M Pg

- Material: High Quality Polyamide6
- Protective: IP 67 (EN 60529)
- Temperature Range: -40° C to +105° C
- Short Term: up to +150° C
- Self-Extinguishing: UL94-HB
- Color: Black & Gray
- Application: Machine tool, Shipbuilding, Tramway Industrial / Automatic Machinery Printing Machine etc. connector for jointing into Limit - Switch.

## PF Thread / 90°Elbow (JIS B0202)

(dimensions in mm)

Order No.											
Black	Gray	Thread	For tube size	S	L <sub>1</sub>	L <sub>2</sub>	L	Ø <sub>i</sub>	Ø <sub>D</sub>	SW	
TWCL-G10B	TWCL-G10G	G1/2"	10	20.9	8	51	62	10	25	19.8	
TWCL-G12B	TWCL-G12G	G1/2"	12	20.9	8	51	60	12	25	22.7	
TWCL-G16B	TWCL-G16G	G1/2"	16	20.9	8	59	66	13	30	28	

## Metric Thread / 90°Elbow (EN 60423)

TWCL-M10B	TWCL-M10G	M12 X 1.5	10	12	8	51	62	7	25	19.8
TWCL-M12B	TWCL-M12G	M16 X 1.5	12	16	8	51	60	10	25	22.7
TWCL-M202B	TWCL-M202G	M20 X 1.5	12	20	8	51	60	12	25	22.7
TWCL-M16B	TWCL-M16G	M20 X 1.5	16	20	8	59	66	13	30	28

## Pg Thread / 90°Elbow (DIN 40424)

TWCL-P09B	TWCL-P09G	Pg09	10	15.2	8	51	62	9	25	19.8
TWCL-P110B	TWCL-P110G	Pg11	10	18.6	8	51	62	10	25	19.8
TWCL-P130B	TWCL-P130G	Pg13.5	10	20.4	8	51	62	10	25	19.8
TWCL-P11B	TWCL-P11B	Pg11	12	18.6	8	51	60	10	25	22.7
TWCL-P132B	TWCL-P132G	Pg13.5	12	20.4	8	51	60	12	25	22.7
TWCL-P162B	TWCL-P162G	Pg16	12	22.5	8	51	60	12	25	22.7
TWCL-P136B	TWCL-P136G	Pg13.5	16	20.4	8	59	66	13	30	28
TWCL-P16B	TWCL-P16G	Pg16	16	22.5	8	59	66	13	30	28