

# F16 Series

Ø16 Switches/Buttons



- 16mm (5/8") mounting holes
- Round, square, rectangular switches
- High brightness LED
- Easy to add contact blocks (up to 3)
- Ø20 flush type available

## Ordering Information

F16 - 1 1 0 - R - 24 - 6 D  
 ① ② ③ ④ ⑤ ⑥ ⑦

① Product Category	1	Pilot Lamp
	2	Momentary
	3	Maintained
	4	2 step selector
	5	3 step selector
	6	2 step key selector
	7	3 step key selector
	8	E-Stop switch (Standard)
	9	Momentary Mushroom Head
	A	E-Stop (Name plate built-in)
L	Lever	

② Type	1	Round
	2	Square
	3	Rectangular
	7	LED Illuminated Round
	8	LED Illuminated Square
	9	LED Illuminated Rectangular

③ Contact Arrangement	0	Pilot Lamp
	1	1NO/1NC
	2	2NO/2NC
	3	3NO/3NC

④ Head Color	R	Red
	G	Green
	Y	Yellow
	W	White
	B	Blue
	K	Black (Non-Illuminated type)

⑤ LED Voltage	6V	6VDC
	12V	12VDC
	24V	24VDC
	110V	110VAC available with transformer F16-T1
		No Voltage

### ⑥ Reset type

	Manual		Automatic	
2 Steps				
Ordering Code	2	0		
3 Steps				
Ordering Code	3	7	6	1

### ⑦ Key release position

A	B		D			
A	B	C	D	E	F	G

## Specifications

General Specification	Rated Insulation Voltage	250VAC/DC		
	Contact Resistance	Max. 50mΩ		
	Insulation Resistance	100MΩ at 500V DC		
	Dielectric Strength	btwn Charger & Earth	2,000VAC for 1 Min.	
		btwn Charging sectors	1,500VAC for 1 Min.	
	Vibration Resistance (resistance load)	Dual wave length 0.1mm (10~55Hz)		
	Shock Resistance	Operation error: 100m/s <sup>2</sup> , Durability 500m/s <sup>2</sup>		
	Expected Life	Mechanical	Push Button (release): Min. 1,000,000	
			Others: 250,000 Min.	
	Electrical	100,000 Min.		
	Frequency of On/Off	1,200 times/hr		
	Ambient Temperature	Operation: -20°C~ +70°C, Storage: -30°C~+80°C		
	Ambient Humidity	45~85%RH (at -5~+40°C)		
	Degree of Protection	IP65(water/Oil proof) - IP40 for Key and Selector Switches		
	Contact Arrangement	1NO/1NC, 2NO/2NC, 3NO/3NC		
Contact Material	Ag Alloy (24K Gold tint)			
Rated Insulation Voltage	250VAC			
Rated Operating Current	5A MAX			
Max. On/Off Voltage	250VAC, 110VDC			
	Resistance load (12VAC/DC) Induction load (13VAC/DC)			
Rated Load	3A at 24VDC	0.7A at 24VDC		
	0.2A at 125VDC	0.15A at 125VDC		
	3A at 11-VAC	1A at 11VAC		
	1.5A at 250VAC	0.7A at 250VAC		
Max. Applicable Load	10mA 5VDC			
LED Lamp	Head Shapes / Colors	Round, Square, Rectangular/ Red, Green, Yellow, Blue, White		
	Rated Voltage	24VDC, 12VDC, 6VDC, 110VAC		
	Rated Current	15mA Approx.		
	Expected Life	50,000hrs		



Pilot Lamps & Push Buttons



Key Switches



Selector Switches

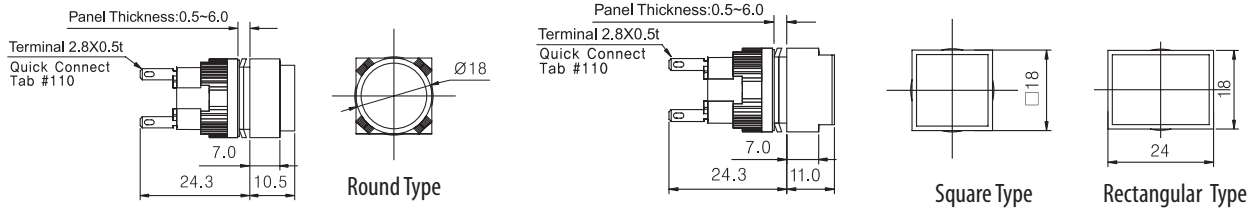


Emergency Resets

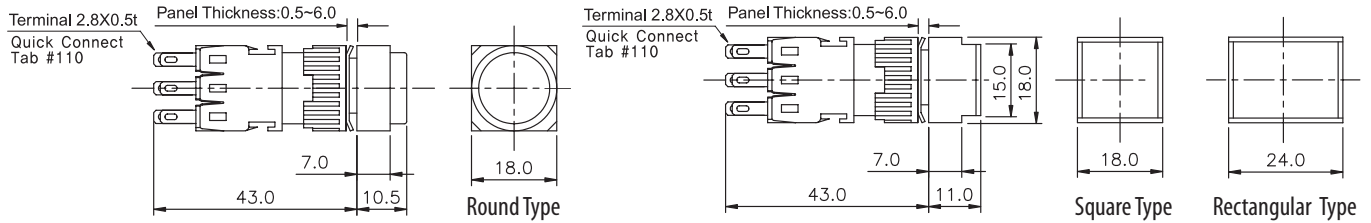


Mushroom Type Push Buttons

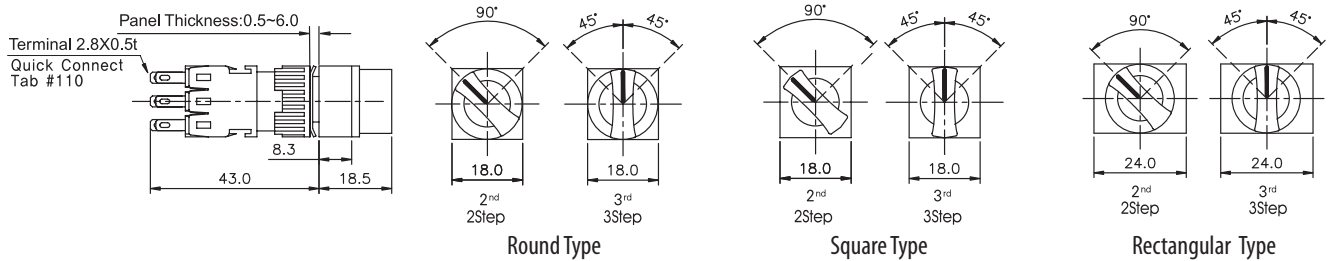
# Dimensions Pilot Lamps



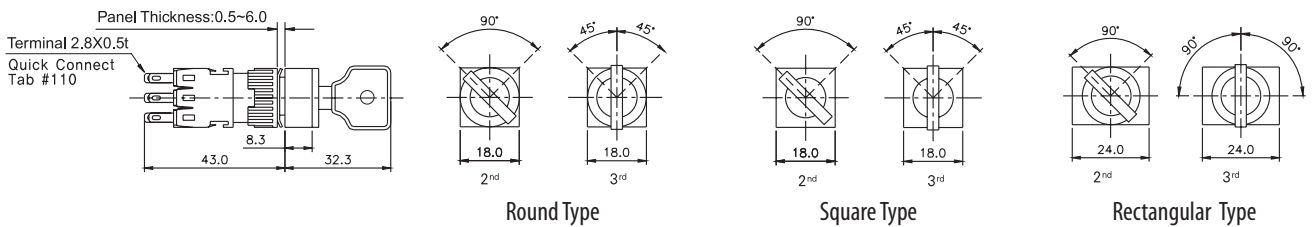
## Push Buttons



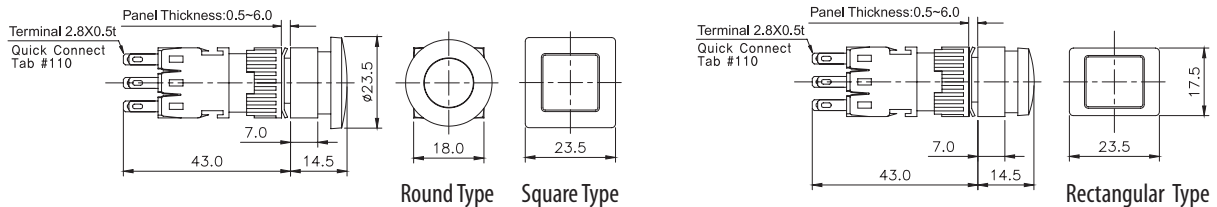
## Selector Switches



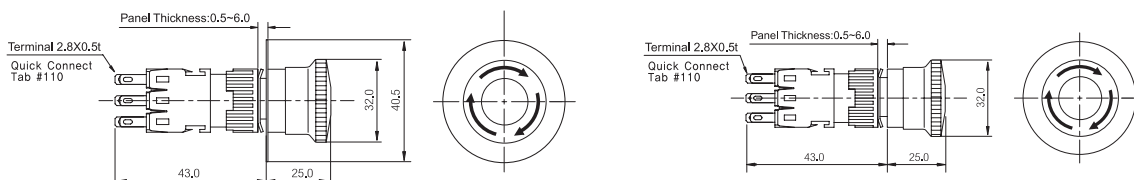
## Key Switches



## Mushroom Type Push Buttons



## Emergency Resets



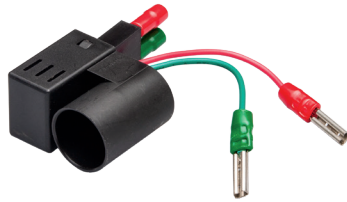
# F16 Accessories

## Terminal Protection

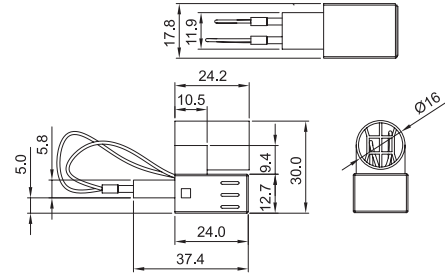


F16-S116

## Transformer

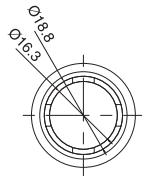


F16-T1 : 220V to 24V

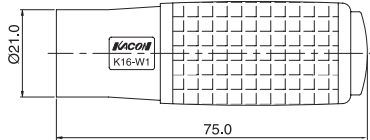


## Hand Tools

Fastener



K16-W1

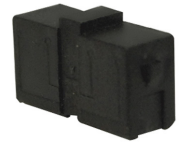


## Contact Block



FCB  
1N/0 + 1N/C

## Blank Block

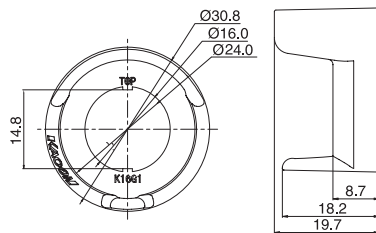


FEB

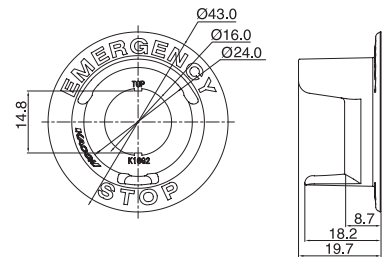
## Safety Guard



K16-G1



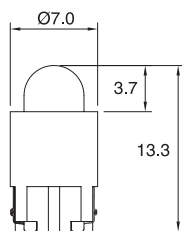
K16-G2



## LED

F16-S115①

① - R, Y, G, B, C & 6, 12, 24VDC



## Hole Cover

K16-S117

