



B30 Series

Ø30 Pilot Lamp



Ordering Information

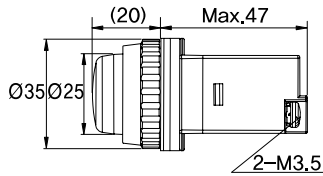
B30 - 17 ① **R** - ② **110VAC**

① Model	R	RED
	G	GREEN
	Y	YELLOW
	B	BLUE
	W	WHITE
② Voltage	24VDC	
	110VAC	

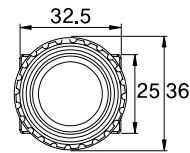
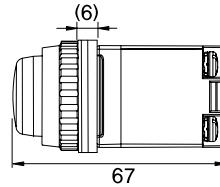
Specifications

Degree of Protection		IP65	
Ambient Temperature	Operation	-25°C~+70°C	
	Storage	-30°C~+80°C	
Ambient Humidity		35~80% RH	
Recommended wire		Copper wire 14-16 AWG	
LED	Normal Current	AC	Approx. 15mA
		DC	Approx. 15mA
	Voltage		24VAC
	Expected Life		Min. 50,000 hrs

Dimensions (Unit: mm)



Packing RubberX3



Great resistance to UV rays ·
Integrated LED microchip system: high brightness ·

KPL Series

Ø22 Pilot Lamp

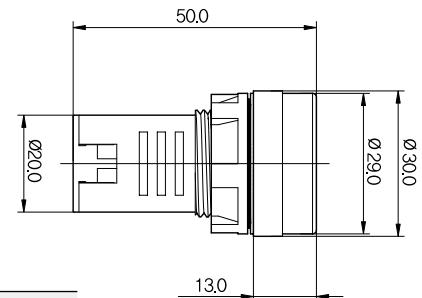


Ordering Information

KPL - ① **R** - ② **12VAC**

① Model	R	RED
	G	GREEN
	Y	YELLOW
	B	BLUE
	W	WHITE
② Voltage	AC	12V
	DC	24V
	AC	110V
		220V

Dimensions (Unit: mm)



* Terminals: No Polarity

Specifications

Nominal Current	Approx. 20mA
Insulation Resistance	100MΩ at 500V DC
Weight	Approx. 24g
Ambient Temperature	-25°C~+55°C with no icing
Expected Life	50,000hrs
Torque	0.8N·m (8.16kg·cm)
Degree of protection	IP65
Recommended wire	Copper wire 14-16 AWG